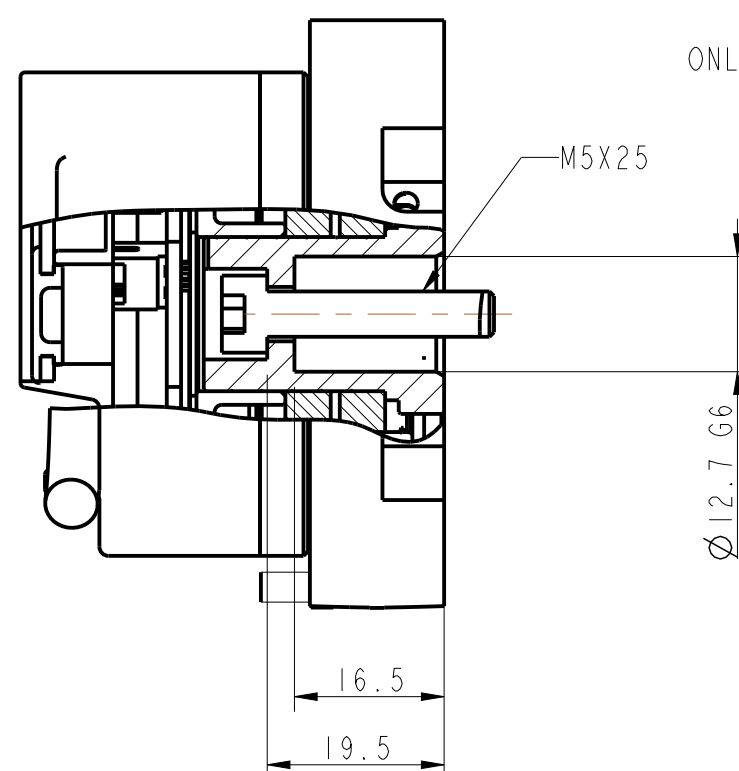


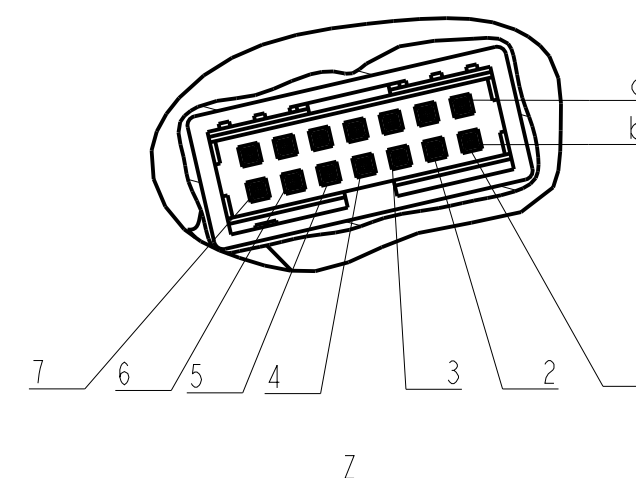
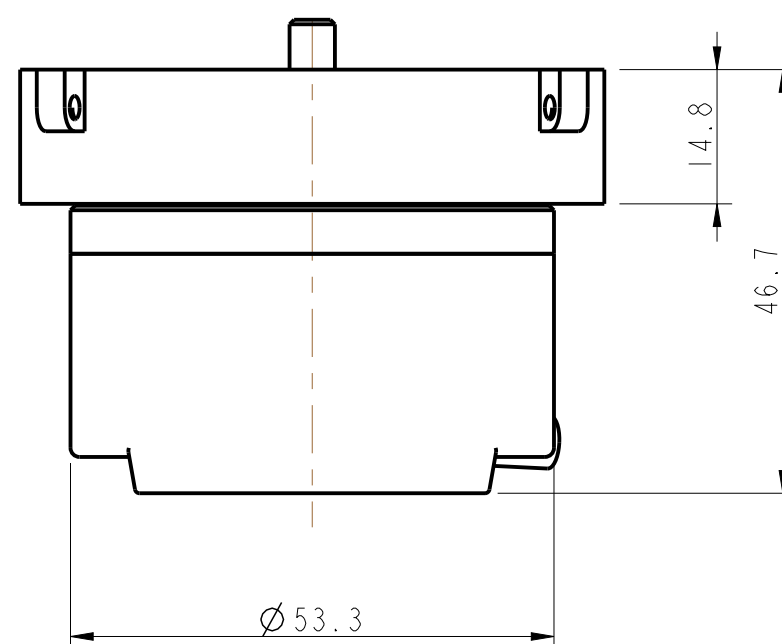
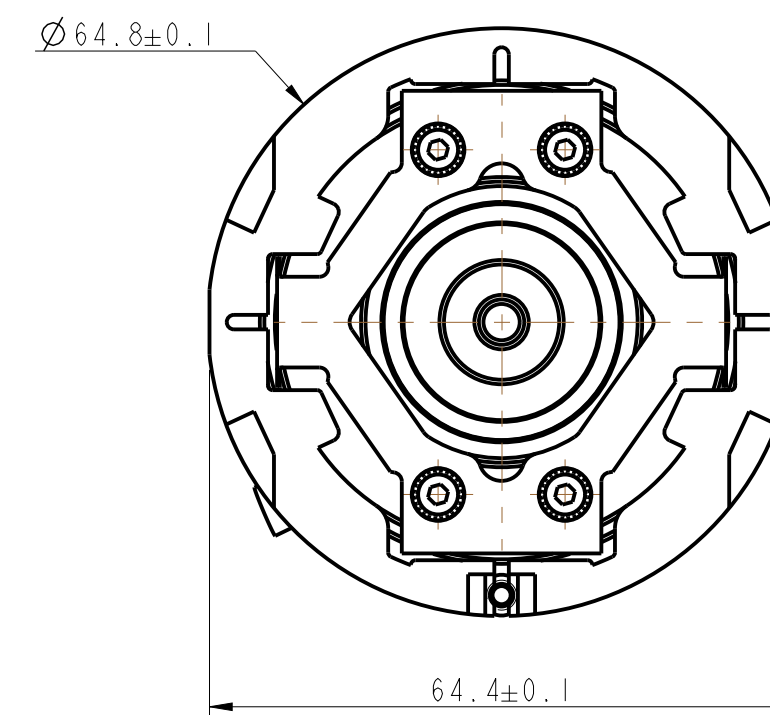
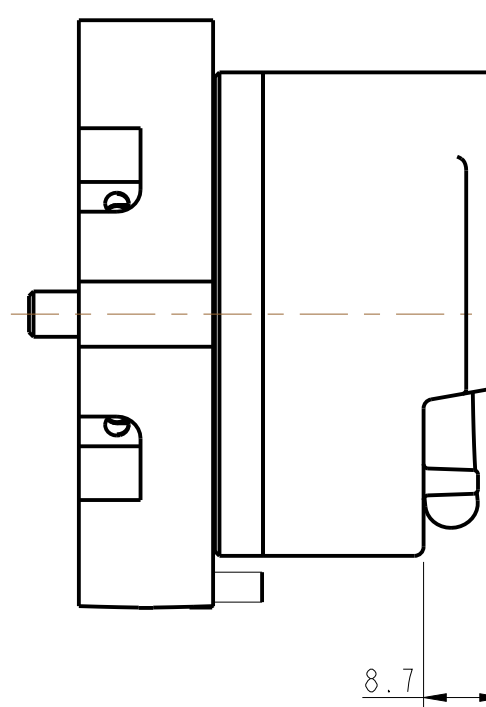
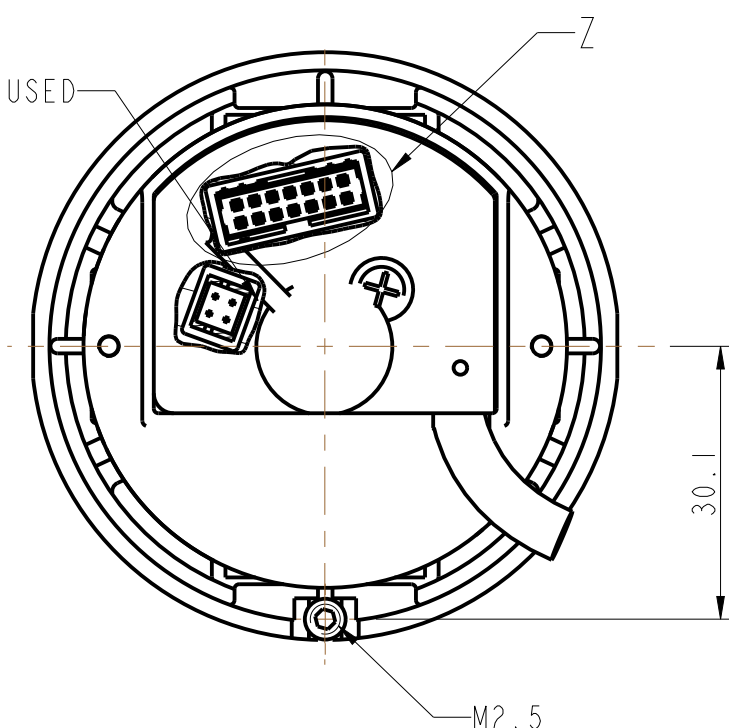
ISO2768-1 MEDIUM

LENGTH/ DIAMETER	0.5-6	>6-30	>30-120	>120-400	>400-1000	>1000-2000	>2000-4000	RADIUS/ CHAMFER	0.5-3	>3-6	>6	ANGLE (shorter side length)	0-10	>10-50	>50-120	>120-400	>400
TOLERANCE	±0.1	±0.2	±0.3	±0.5	±0.8	±1.2	±2	TOLERANCE	±0.2	±0.5	±1	TOLERANCE	±1°	±0.5°	±0.3°	±0.15°	±0.1°

REV	ECN	DATE	APPROVED

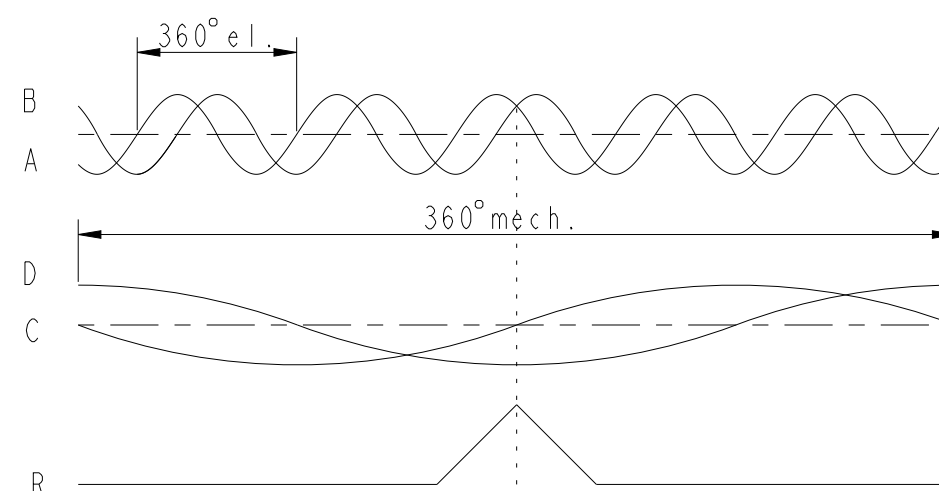


ONLY FOR MANUFACTURER USED



Electrical Data:
 Code: Incremental with sin/cos interface
 Number of pulses: 2048
 Operating Voltage: 5 ±10% VDC
 No-load supply current: 150mA max
 Output Signals: sin/cos 1Vpp
 Maximum Response Frequency: 180 kHz
 Mechanical Data:
 Weight: 200g typ.
 Dimensions:
 Outside Diameter with cover: 53.3mm; Mounting depth: 46.7mm
 Material:
 Bearing housing: aluminium;
 Cover: aluminium;
 Shaft: Brass
 Shaft Diameter: 12.7mm
 Mating Shaft Runout: ±0.1mm max.
 (Includes shaft perpendicularity to mounting surface)
 Mating Shaft Axial movement: max. ±0.4mm
 Max. Velocity: 6000 RPM,
 Environmental:
 Operating Temperature: -20°C to +100°C
 Storage Temperature: -40°C to +120°C
 Shock: 100 Gs for 11 msec duration
 Vibration: 10 Gs at 5 to 2000 Hz
 Relative Humidity: 95% non-condensing
 Enclosure Rating: IP 40 (Cable needs to be oriented downwards)

Signal Format
 CW SHAFT ROTATION



PIN	Color	Function
1a	BRN	C-
1b	GRY/PNK	5V
2a	YLW	A-
2b	BLK	D+
3a	GRN/BRN	Sensor 0V
3b	BLU	B+
4a	PNK	R-
4b	GRY	R+
5a	RED	B-
5b	WHT/GRN	GND
6a	VIO	D-
6b	GRN	A+
7a	RED/BLU	Sensor Up
7b	WHT	C+

TOLERANCES UNLESS INDICATED:	UNITS: mm	TITLE	OUTLINE & SPEC, RS20 OPT08
.XXX / ± /	MATERIAL:	FILE NAME:	703058-0007
.XX / ± /	FINISH:	SCALE:	/
ANGLES /		COMPLIANCE REQUIRED	<input type="checkbox"/> UL <input type="checkbox"/> CSA <input type="checkbox"/> CE <input type="checkbox"/> TUV
© 2013 D.T.C. "C" SIZE		DRAWN:	DEVIN
HENGSTLER		DATE:	2012-11-09
		DEVIN	2012-11-09
		CHECKED:	DEVIN
		RELEASED:	YC
		DATE:	2012-11-09
		DRAWING NUMBER	703058-0007
		APPLICATION: RS20 OPT08	
		REV	-