
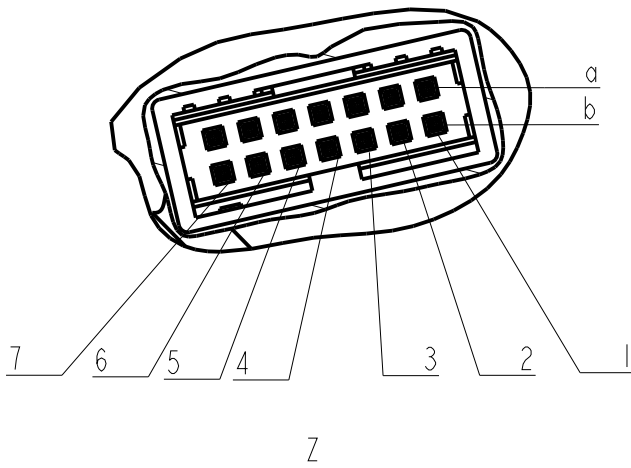
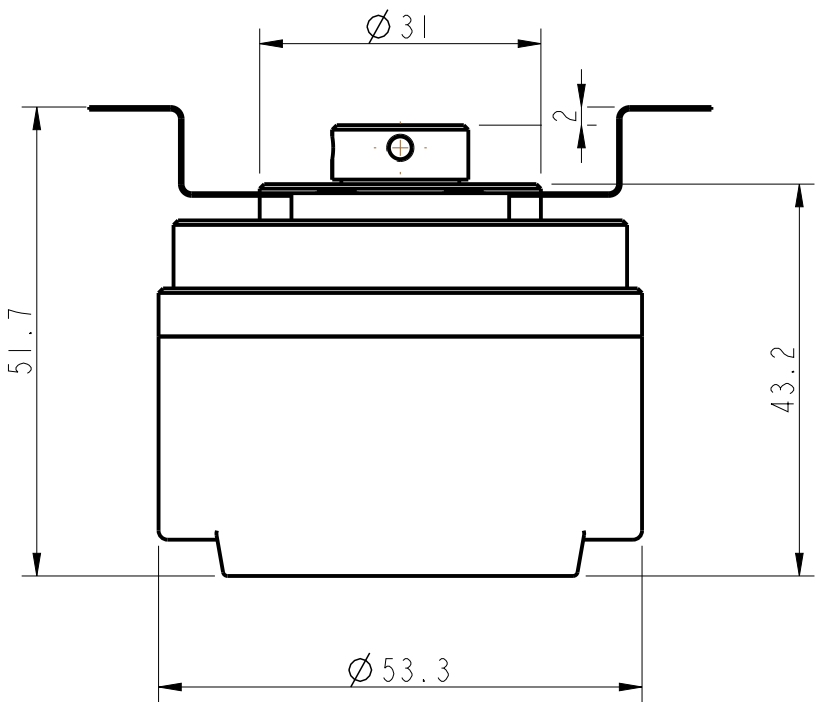
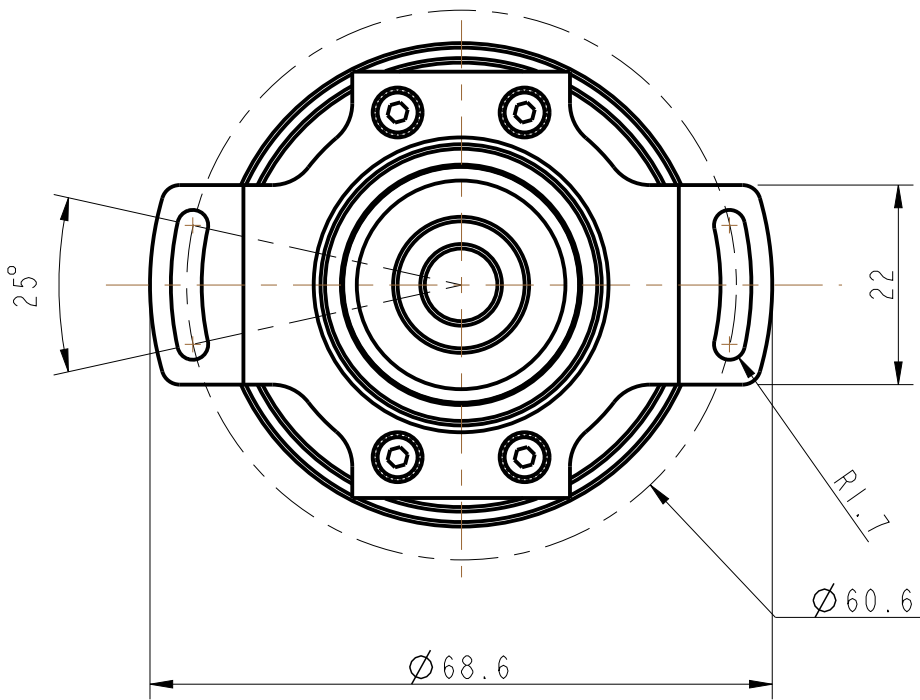
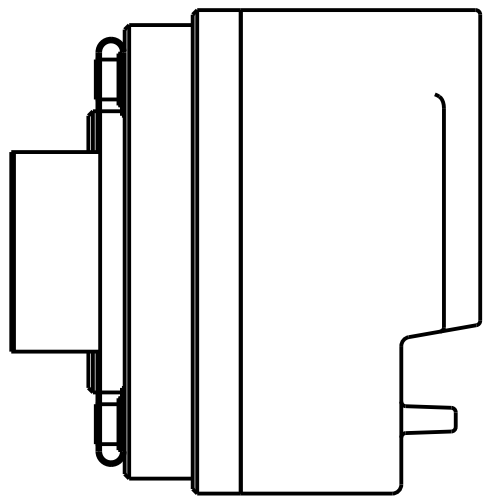
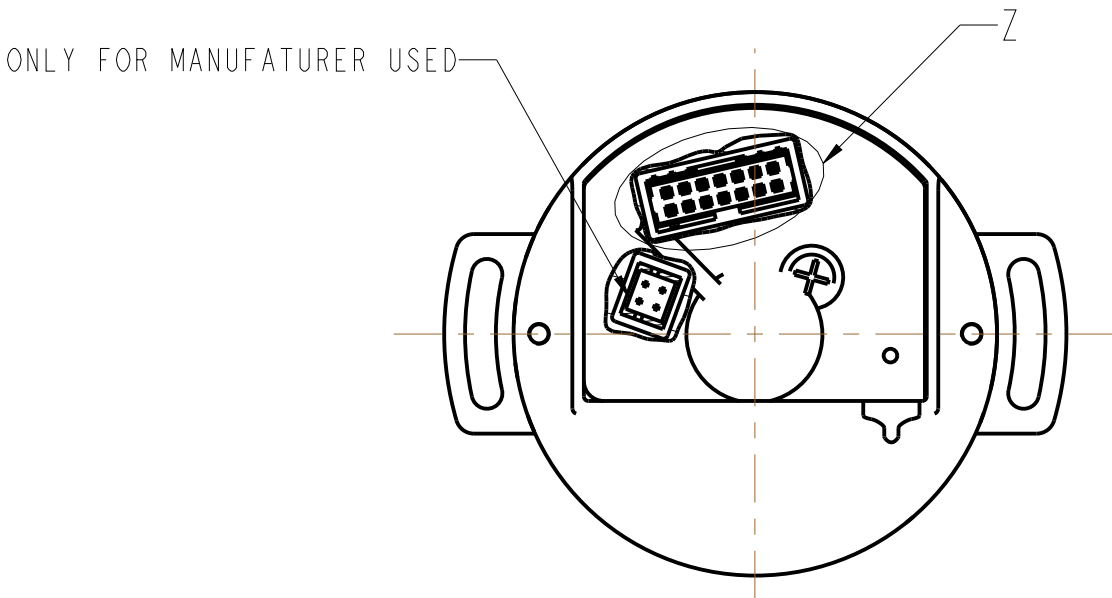
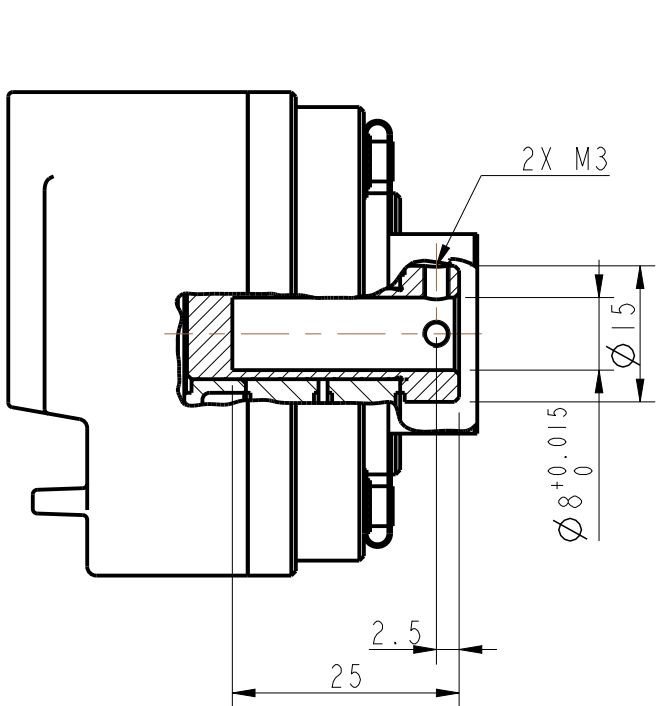
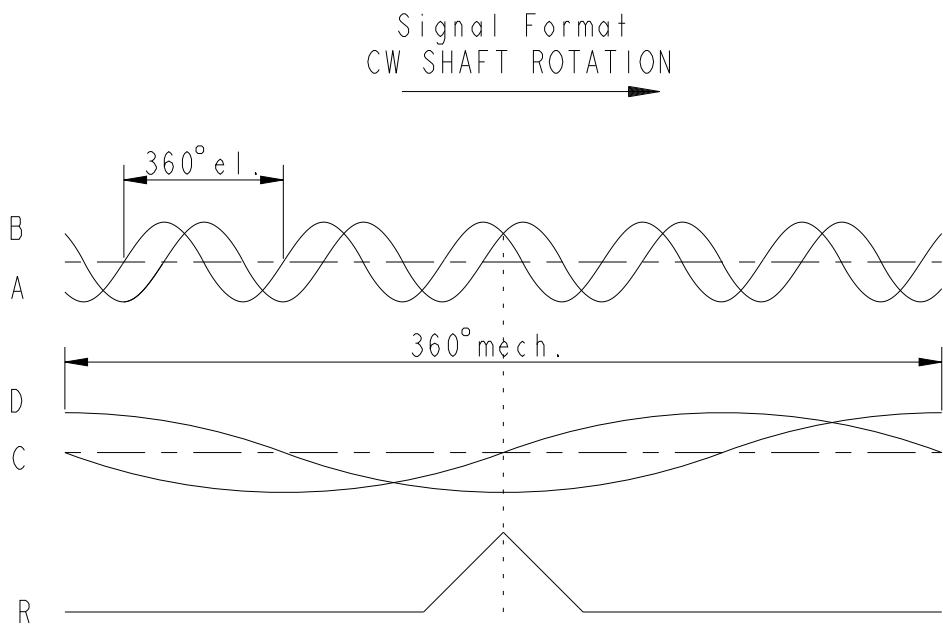


ISO2768-1 MEDIUM																			REV    ECN    DATE    APPROVED			
	LENGTH/ DIAMETER	0.5-6	>6-30	>30-120	>120-400	>400-1000	>1000-2000	>2000-4000	RADIUS/ CHAMFER	0.5-3	>3-6	>6	ANGLE (shorter side length)	0-10	>10-50	>50-120	>120-400	>400				
	TOLERANCE	±0.1	±0.2	±0.3	±0.5	±0.8	±1.2	±2	TOLERANCE	±0.2	±0.5	±1	TOLERANCE	±1°	±0.5°	±0.3°	±0.15°	±0.1°				



Electrical Data:  
Code: Incremental with sin/cos interface  
Number of pulses: 2048  
Operating Voltage: 5 ±10% VDC  
No-load supply current: 150mA max  
Output Signals: sin/cos 1Vpp  
Maximum Response Frequency: 180 kHz  
Mechanical Data:  
Weight: 200g typ.  
Dimensions:  
Outside Diameter with cover: 53.3mm; Mounting depth: 51.7mm  
Material:  
Bearing housing: aluminium;  
Cover: aluminium;  
Shaft: brass  
Mating Shaft Runout: ±0.1mm max.  
(Includes shaft perpendicularity to mounting surface)  
Mating Shaft Axial movement: max. ±0.4mm  
Max. Velocity: RPM= (Frequency/PPR) x 60; or 1465 RPM,  
or 1465 RPM, whichever is less;  
Environmental:  
Operating Temperature: -20°C to +100°C  
Storage Temperature: -40°C to +120°C  
Shock: 100 Gs for 11 msec duration  
Vibration: 10 Gs at 5 to 2000 Hz  
Relative Humidity: 95% non-condensing  
Enclosure Rating: IP 40 (Cable needs to be oriented downwards)



Connector		
PIN	Color	Function
1a	BRN	C-
1b	GRY/PNK	5V
2a	YLW	A-
2b	BLK	D+
3a	GRN/BRN	NC
3b	BLU	B+
4a	PNK	R-
4b	GRY	R+
5a	RED	B-
5b	WHT/GRN	GND
6a	VIO	D-
6b	GRN	A+
7a	RED/BLU	NC
7b	WHT	C+

TOLERANCES UNLESS INDICATED:			UNITS: mm		TITLE RS20/OPT14		
.XXX	.XX	ANGLES	MATERIAL:		FILE NAME:	SCALE:	COMPLIANCE REQUIRED <input type="checkbox"/> UL <input type="checkbox"/> CSA <input type="checkbox"/> CE <input type="checkbox"/> TUV <input type="checkbox"/> FCC <input type="checkbox"/> VCCI <input checked="" type="checkbox"/> RoHS <input type="checkbox"/> ATEX
±	±	±	FINISH:		703255-0001	/	
					DRAWN:	DATE:	PRO/E MODEL: 703255-0001
					DEVIN	2017-04-27	APPLICATION: RS20
					CHECKED:	DATE:	DRAWING NUMBER
					ERIC	2017-04-27	703255-0001
					RELEASED:	DATE:	REV
					YC	2017-04-27	1